

24. MUD PAINTING

Beauty:
engage with nature
through art.

Linked to
contact and
meaning.

Objective:

To create a picture using mud as paint and natural materials as tools.

Resources

Essential:

Mixing bowl
Trowel
Mud
Water
Natural materials
Plain card

Optional:

Paint brushes
Different compositions of mud (compost, clay etc)

Hints & Tips

Create a scavenger list with items on that can be used as artist tools. For example, a thick stick, a feather, a leaf.

Try different techniques, painting, printing, splattering etc.
Try different amounts of water. How does it affect the mud's consistency?

Suggest a theme for the children and families to paint. For example, their favourite animals or plants, something they can see or someone they care about.

Plenary/Wrap Up

Ask if anyone would like to share their pieces of art with group.

What made good artist tools and why?

Follow-on activities: Barefoot trail (no 4), Ticky prickly (no 8), Seed bombs (no 15) and Minibeast safari (no 16).

Instructions:

1. Ask the children and families what tools they need to create a piece of art, and what could they use from the natural environment instead. For example, a stick for a pen, a feather for a paint brush etc.
2. We'll be using mud as the paint so you will need to find a good stirring stick.
3. Introduce how to use any equipment safely and ask the children how they can stay safe during the activity.
4. It's time to get collecting. Children and families go on a scavenger hunt to find the tools they will need to create their artwork.
5. Once you have your tools, it's time to get mixing the mud.
6. Mix a cup of mud with half a cup of water using a stirring stick. Keep adding water until you are happy with the consistency
7. It's time to get creative! On a piece of card, experiment using the different natural materials to make a mud painting.

RSPB Wild Challenge

Framed writing page
Make a Butterfly Garden
Make a Toad Hole



24. PEINTIO Â MWD



harddwch:
ymgysylltu â natur
drwy waith celf.

Cysylltiedig â
cyswllt ac
ystyr

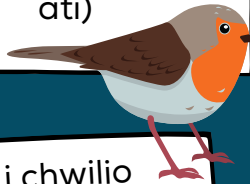
Adnoddau

Hanfodol:

Bowlen gymysgu
Trywel
Mwd
Dŵr
Deunyddiau naturiol
Cerdyn plaen

Dewisol:

Brwshys paent
Mwd o wahanol
gyfansoddiad
(compost, clai ac
ati)



Awgrymiadau

Gwnewch restr o bethau i chwilio amdanynt – pethau y gellir eu defnyddio fel offer artist. Er enghraifft, ffon drwchus, pluen, deilen.

Rhowch gynnig ar wahanol dechnegau - peintio, argraffu, ysgeintio ac yn y blaen.

Rhowch gynnig ar ddefnyddio gwahanol symiau o ddŵr. Sut mae'n effeithio ar drwch y mwd?

Awgrymwch thema ar gyfer gwaith peintio'r plant a'r teuluoedd. Er enghraifft, eu hoff anifeiliaid neu blanhigion, rhywbeth maen nhw'n gallu ei weld neu rywun maen nhw'n meddwl llawer ohono.

Grŵp llawn / crynodeb

Gofynnwch a fyddai rhywun yn hoffi rhannu ei waith celf gyda'r grŵp.

Beth oedd yn gwneud offer da i artist a pham?

Gweithgareddau dilynol: Mynd yn droednoeth (rhif 4), Coslyd pigog (rhif 8), Bomiau hadau (rhif 15) a Safari bwystfilod bach (rhif 16).

Amcan:

Creu llun gan ddefnyddio mwd fel paent a deunyddiau naturiol fel offer.

Cyfarwyddiadau:

1. Gofynnwch i'r plant a'r teuluoedd pa offer maen nhw eu hangen er mwyn creu darn o waith celf, a beth allen nhw ei ddefnyddio o'r amgylchedd naturiol yn eu lle. Er enghraifft, darn o bren yn lle pensel, pluen fel brwsh paent ac yn y blaen.
2. Byddwn yn defnyddio mwd fel y paent, felly bydd angen i chi ddod o hyd i ddarn cryf o bren i'w gymysgu.
3. Eglurwch sut mae defnyddio'r offer yn ddiogel a gofynnwch i'r plant sut y gallan nhw gadw'n ddiogel yn ystod y gweithgaredd
4. Mae'n amser casglu pethau. Y plant a'r teuluoedd yn mynd i chwilota am yr offer y bydd eu hangen i greu eu gwaith celf.
5. Pan fyddwch wedi cael yr offer, bydd yn amser cymysgu'r mwd.
6. Cymysgwch gwpanaid o fwd â hanner cwpanaid o ddŵr, gan ddefnyddio ffon i gymysgu. Daliwch i ychwanegu dŵr nes byddwch yn fodlon â'r thrwch y gymysgedd.
7. Mae'n amser i chi fod yn greadigol! Ar ddarn o gerdyn, arbrowfch gan ddefnyddio'r gwahanol ddeunyddiau naturiol i wneud llun wedi'i beintio â mwd.

Sialens Wylt RSPB

Tafllen wedi fframio
Creu Gardd Glöynnod Byw
Creu Twll i Lyffantod

